

**USEFUL LINKS:**

[Mosaic Family Support—supporting bereaved children in Dorset](#)

**Mental Health in Schools Support Team**

[Information](#)

[Self referral](#)

[BCP Council Family information Directory—provides a range of services for you and your family](#)

**The Family Hub at Somerford Christchurch**

[christchurchfamilyhub@bcpcouncil.gov.uk](mailto:christchurchfamilyhub@bcpcouncil.gov.uk)

Young Minds:

[Mental Health Support For Young People | YoungMinds](#)

School Navigator—Monthly drop-ins at CJS with Steph Rice (advertised in our school newsletter).

“Effective pastoral support ensures that pupils’ well-being and emotional needs remain a top priority.”

OFSTED 2022



**Christchurch Junior School**

Belonging - Achieving - Growing



# Pastoral Care



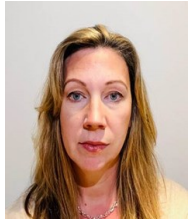
**Christchurch Junior School**

Belonging - Achieving - Growing



## The Pastoral Care Team

The Pastoral Care Team comprises of:



**Pupil and Family Support Manager**

**Lisa Sykes**

Lisa has a background working in counselling services.



**WO (Welfare Officer)**

**Kate Byles**

Kate is ELSA trained.



**ELSA worker**

**Nina Gibson**

Nina is ELSA trained.

### Role of Pastoral Care Worker:

- To listen and talk to children who may need help with a variety of pastoral issues e.g. family difficulties, divorce, separation, friendship difficulties, illness, bereavement etc.
- To offer parents information and resources, including signposting to appropriate agencies.
- To work closely with our partner schools and other professionals to support our children and their families.
- To work with staff in ensuring good pupil support.

### Role of the Welfare Officer:

- To help children with social skills, emotions, social stories, bereavement, anger management, self-esteem and friendship issues.
- WOs may work with children on a 1:1 basis or in small groups.

### Role of ELSA Worker

- To help children either 1:1 or in small groups with social skills, emotions, social stories, bereavement, anger management, self-esteem and friendship issues.

## How to refer your child for pastoral support

Contact your **class teacher** who will discuss with parents/ carers and record concerns.



Agree with class teacher, helpful tutor based strategies to support your child. This may include access to supported lunch time club or nurture playground.

Agree a review date.



If progress has been made, continue with ongoing class support. If progress is limited, your teacher will complete a referral form to the pastoral care team.



### PASTORAL OFFER:

All referrals to the team are assessed by the Pastoral Care Team to see which member of staff and pastoral interventions are best to support the child.

**How long for?** Pastoral support will often be for a period of 6-8 weeks.

### What types of support could be offered?

- Small group intervention e.g. regulating emotions, self esteem and positive self image, social skills or a bespoke programme.
- 1:1 counselling or listening ear.
- 1:1 wellbeing check-ins from one of the pastoral team.

**What happens post intervention?** The child, teacher, parents and pastoral workers views will be gathered. A second cycle of intervention may be required following a period when taught strategies are used back in the classroom.



Referral to one of these external services may be made.



EARLY HELP



MHST



MOSAIC



CAMHS