



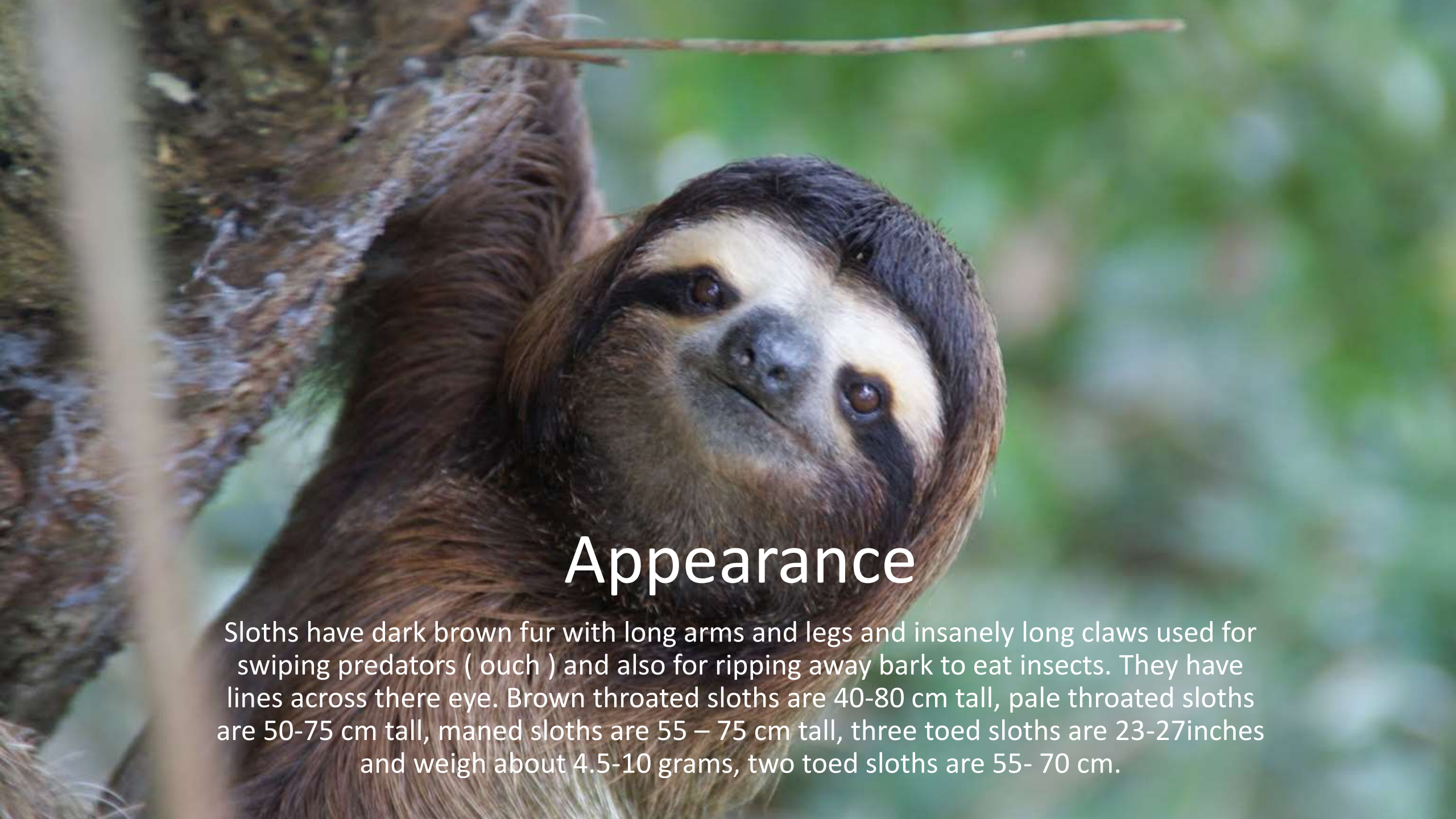
Sloths

Sloths are definitely amazing creatures. Keep on reading if you want to know more!



What do sloths eat?

Sloths eat leaves, buds and even bird eggs they will also eat lizards and insects.



Appearance

Sloths have dark brown fur with long arms and legs and insanely long claws used for swiping predators (ouch) and also for ripping away bark to eat insects. They have lines across their eye. Brown throated sloths are 40-80 cm tall, pale throated sloths are 50-75 cm tall, maned sloths are 55 – 75 cm tall, three toed sloths are 23-27 inches and weigh about 4.5-10 grams, two toed sloths are 55- 70 cm.



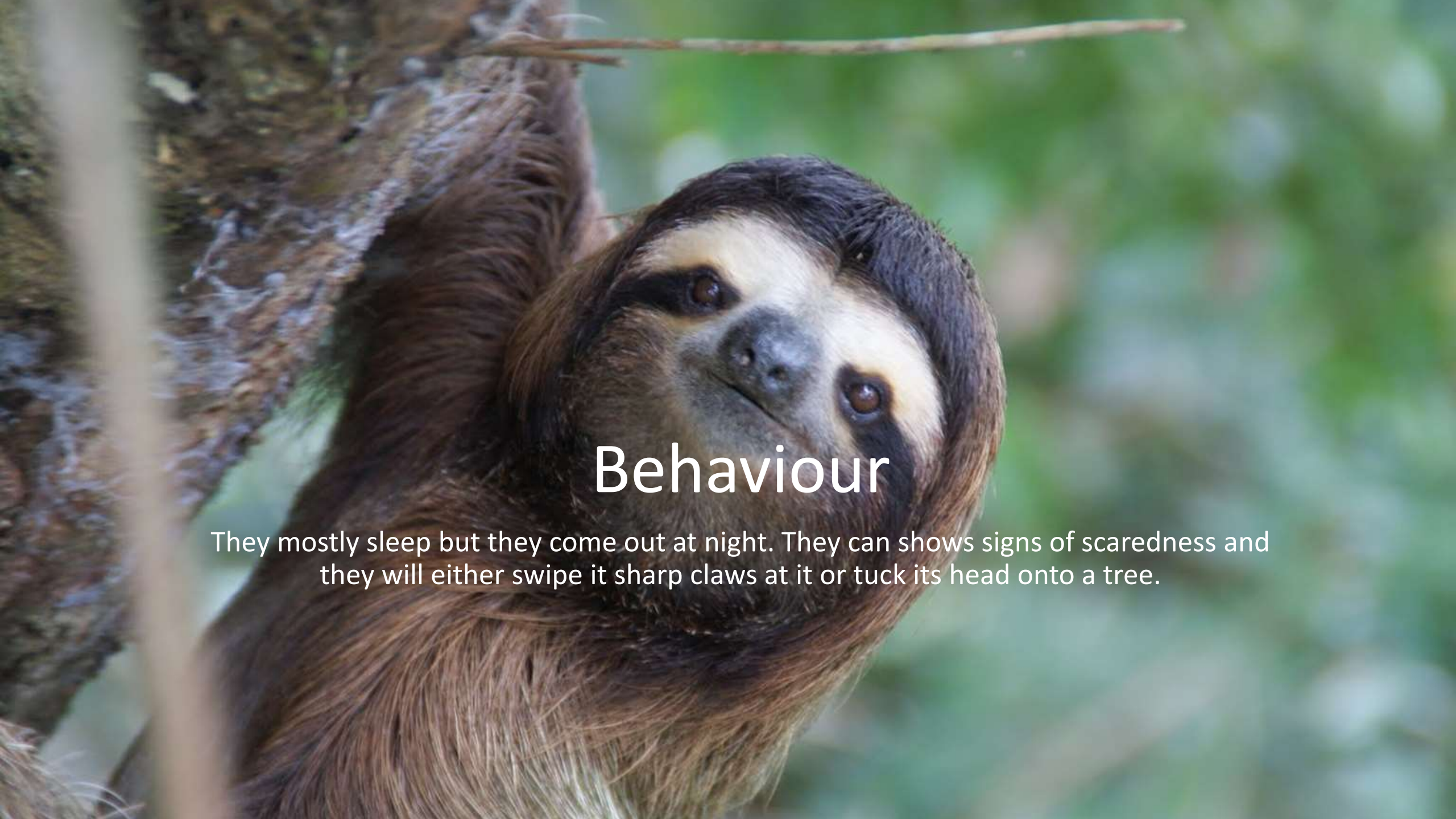
Fun facts

Sloths sleep 20 hours every day.

Sloths can do a lot of damage
to other predators.

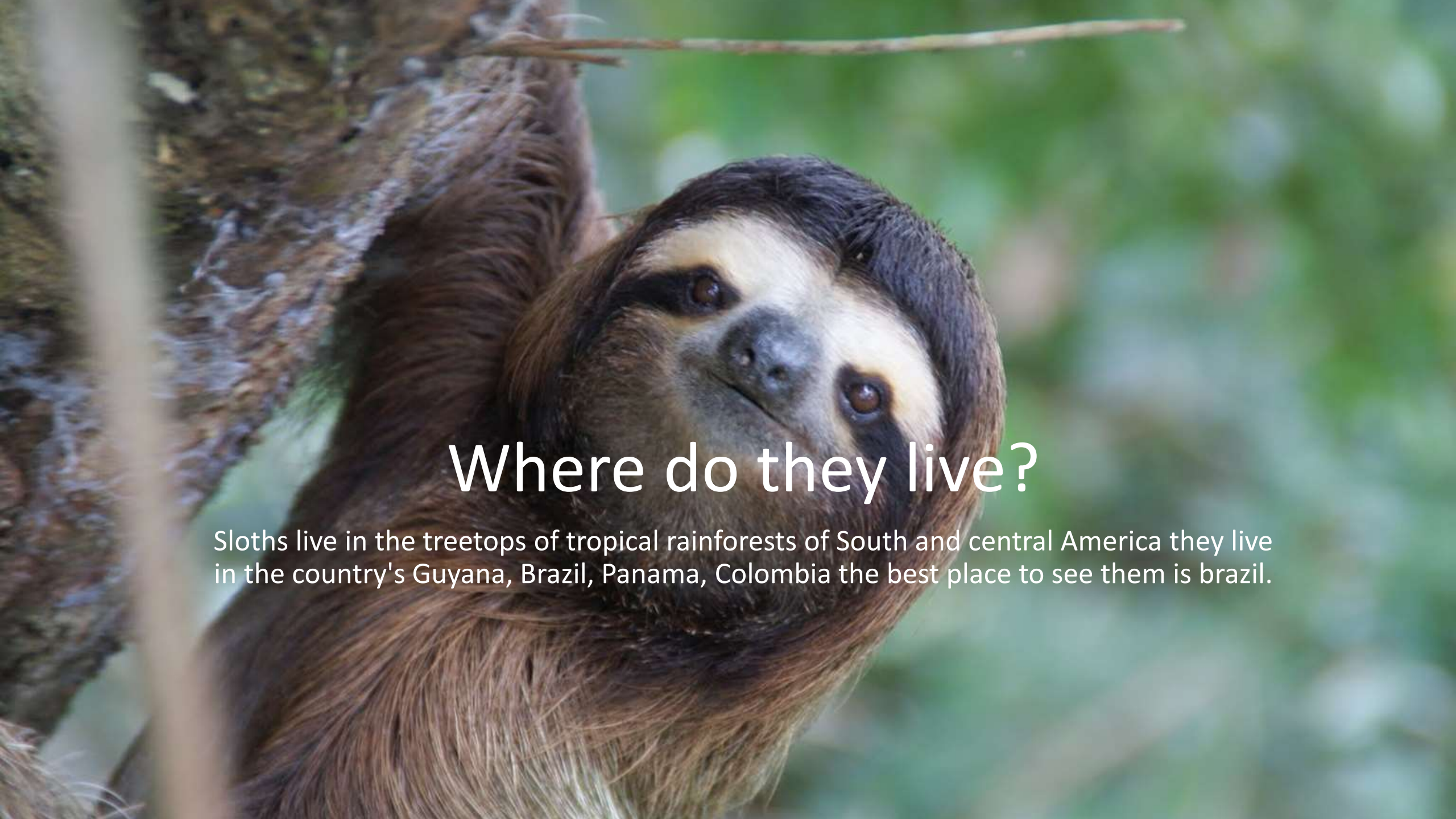
When swiping there sharp claws.

Sloths can have as many as 300 species of animal
on its back .



Behaviour

They mostly sleep but they come out at night. They can show signs of scaredness and they will either swipe it sharp claws at it or tuck its head onto a tree.



Where do they live?

Sloths live in the treetops of tropical rainforests of South and central America they live in the country's Guyana, Brazil, Panama, Colombia the best place to see them is brazil.